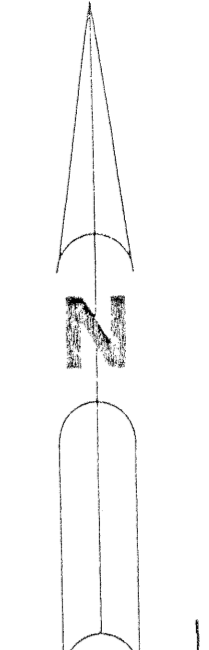
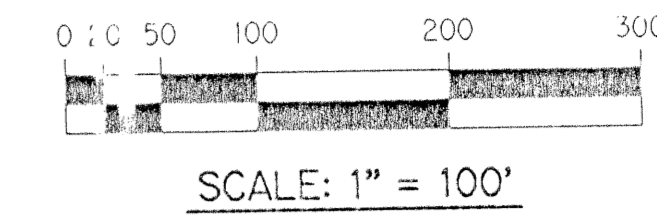


BOCA FALLS - PLAT ONE

A PART OF THE BAY WINDS PLANNED UNIT DEVELOPMENT
A PARCEL OF LAND LYING IN SECTION 22, TOWNSHIP 47 SOUTH, RANGE 41 EAST.
PALM BEACH COUNTY, FLORIDA

SHEET 7 OF 8 MAY, 1994

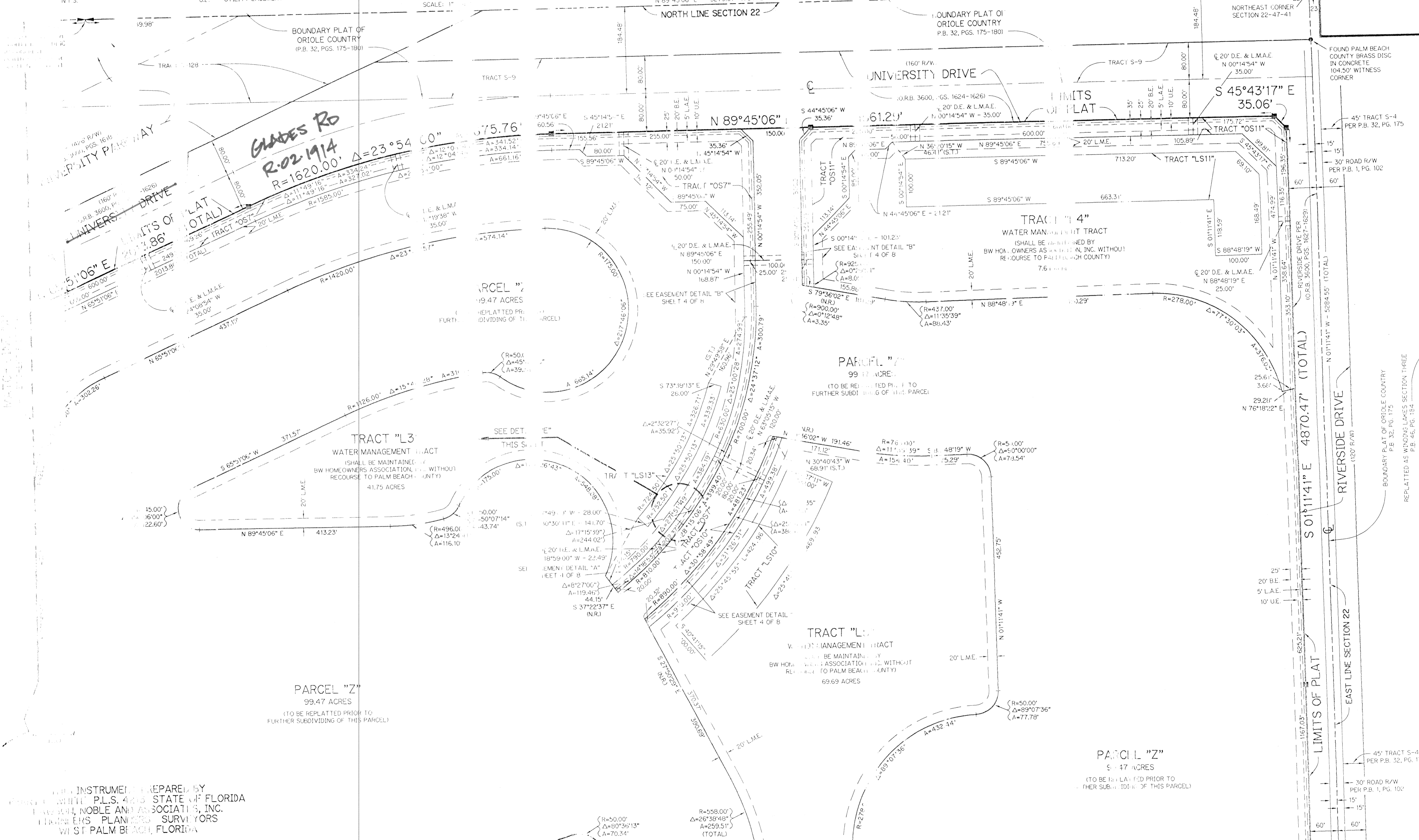


LEGEND:

- - PERMANENT REFERENCE MONUMENT, PLS #4213
- - PERMANENT CONTROL POINT, PLS #4213
- △ - DELTA ANGLE
- A - ARC LENGTH
- B.E. - BUFFER EASEMENT
- D.E. - DRAINAGE EASEMENT
- L.A.E. - LIMITED ACCESS EASEMENT
- L.M.A.E. - LAKE MAINTENANCE ACCESS EASEMENT
- L.M.E. - LAKE MAINTENANCE EASEMENT
- L.W.D.D. - LAKE WORTH DRAINAGE DISTRICT
- NR - NOT RADIAL
- N.T.S. - NOT TO SCALE
- O.R.B. - OFFICIAL RECORD BOOK
- P.B. - PLAT BOOK
- PGS. - PAGES
- P.L.S. - PROFESSIONAL LAND SURVEYOR
- P.U.D. - PLANNED UNIT DEVELOPMENT
- R - RADIIUS
- R/W - RIGHT-OF-WAY
- S.T. - SURVEY TIE
- U.E. - UTILITY EASEMENT

DETAIL "E"
SCALE: 1" = 100'

KEY MAP
N.T.S.



SUBDIVISION - BOCA FALLS - PLAT ONE
 BOOK 73 PAGE 130
 FLOOD ZONE AD-1 FLOOD MAP # 100-B
 QUAD # 69 ZONING RT
 SE 80-47 ZIP CODE 33433
 PLOD NAME BAY WINDS P.U.D.
 22/1/1/1

T-2-778

THIS INSTRUMENT PREPARED BY
 JOHN W. WHITE, P.L.S. #4213 STATE OF FLORIDA
 LAND SURVEYOR, NOBLE AND ASSOCIATES, INC.
 LAND SURVEYORS, PLANNERS, SURVEYORS
 WEST PALM BEACH, FLORIDA

MATCH LINE "C"
SEE SHEET 5 OF 8

MATCH LINE "C"
 SEE SHEET 5 OF 8
0201-015
BOCA FALLS - PLAT ONE
 73/130 SHEET 7 OF 8